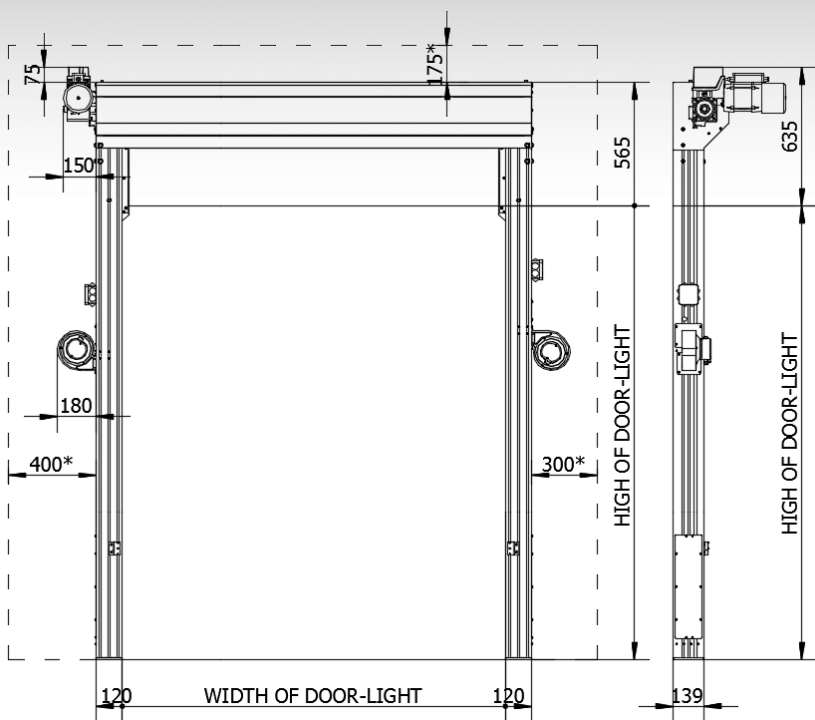


High Speed Door 150 VF Self Repairable® Double Canvas with Forced Ventilation

Is the best solution to separate interior areas at different temperatures to avoid the formation of condensation of water or ice, gaining greater noise attenuation and allowing quick step. The thermal barrier is achieved thanks to the warm air introduced between both canvases. It also incorporates a system that allows, in case of impact against the canvas, it's leaving guides, to be introduced to guides, with the push of a button, so that repair and maintenance costs are minimized.



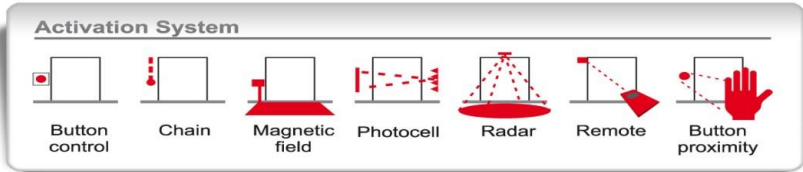
Measures for self-repairable door with aluminium cover. Consult measures for other kinds

* Measures required for installation and maintenance operations.

Product standard: EN 13241-1

Section of this standard	Essential characteristics	Units	Value
4.2.8	Safe opening	-	AGREE
4.2.5	Glass opening	-	DO NOT APPLY
4.2.3	Mechanical resistance and stability	-	AGREE
4.3.3	Manual strength	-	AGREE
4.4.1	Water permeability	-	DO NOT APPLY
4.2.9	Danger substance emission	-	AGREE
4.4.3	Resistance to the wind load	Pa	76,5 Pa; Class 0 (≤ 40 km/h)
4.4.4	Direct noise reduction	dB(A)	DO NOT APPLY
4.4.5	Thermal resistance	W/(m ² ·K)	DO NOT APPLY
4.4.6	Air permeability	m ³ /(m ² ·h)	DO NOT APPLY
4.2.4 y 4.4.7	Durability	-	Cycles: 250.00

Self Repairable® Double Canvas 150 VF

TECHNICAL DATA																												
MAXIMUM MEASUREMENTS (mm)	W=3000 x H=4000																											
APPLICATIONS AREA	INTERIOR (-20°C ~ +40°C)																											
OPENING SPEED	STANDARD UP TO 1,2 m/s																											
CLOSING SPEED	STANDARD DOWN TO 0,6 m/s																											
STRUCTURE MATERIALS	ALUMINIUM																											
ROLLED DRUM	ALUMINIUM																											
CANVAS	FLAMEPROOF TYPE M2, THICKNESSES 0,8 mm (950gr/m2)																											
GEARED MOTOR	DIRECT AXIS																											
SAFETY SYSTEM	ANTI-DROP SYSTEM																											
SENSITIVE SAFETY SYSTEM	PHOTOCELL																											
CONTROL PANEL WITH CONVERTER AND AUTOMATON	MEASURES 300x400x200 PROTECTION IP66																											
ELECTRIC SUPPLY	220-240 V a.c (F+N+PE) 50-60 Hz 1 - 4 kW																											
ACTIVATION SYSTEMS																												
STRUCTURE COLOURS	<table border="1"> <tr> <td>LACQUERED</td> <td></td> </tr> <tr> <td></td> <td>WHITE</td> </tr> </table>	LACQUERED			WHITE																							
LACQUERED																												
	WHITE																											
CANVAS COLOURS	<table border="1"> <tr> <td>WHITE</td> <td>9005</td> <td>7016</td> <td>3002</td> <td>6026</td> <td>5002</td> <td>1003</td> <td>7030</td> <td>2004</td> </tr> <tr> <td colspan="9">FOR OTHER COLOURS, PLEASE CONSULT</td> </tr> <tr> <td colspan="9">*OPTIONAL ANTISTATIC BLUE CANVAS</td> </tr> </table>	WHITE	9005	7016	3002	6026	5002	1003	7030	2004	FOR OTHER COLOURS, PLEASE CONSULT									*OPTIONAL ANTISTATIC BLUE CANVAS								
WHITE	9005	7016	3002	6026	5002	1003	7030	2004																				
FOR OTHER COLOURS, PLEASE CONSULT																												
*OPTIONAL ANTISTATIC BLUE CANVAS																												
WINDOWS CANVAS	STANDARD: 1 ROW OF WINDOWS																											
ADDITIONAL FEATURES	SAS (INTERLOCK) ◻ ROLLER CONVEYOR ◻ DOUBLE HEIGHT ◻ COMMUNICATION ◻ ANTI-HUMIDITY KIT STAINLESS STEEL COMPONENTS ◻ IP 65 MOTOR AND PUSH BUTTONS ◻ FOR OTHER OPTIONS, PLEASE CONSULT.																											

CONTROLSA, S.A reserves the right to change models and characteristics without prior warning. The technical data published in this catalogue is provided for information only, and entails no commitment whatsoever by CONTROLSA, S.A.

The total or partial reproduction of the data, drawings and/or photographs used in this catalogue is totally forbidden, as is any transmission by electronic, mechanical, reprographic or magnetic medium